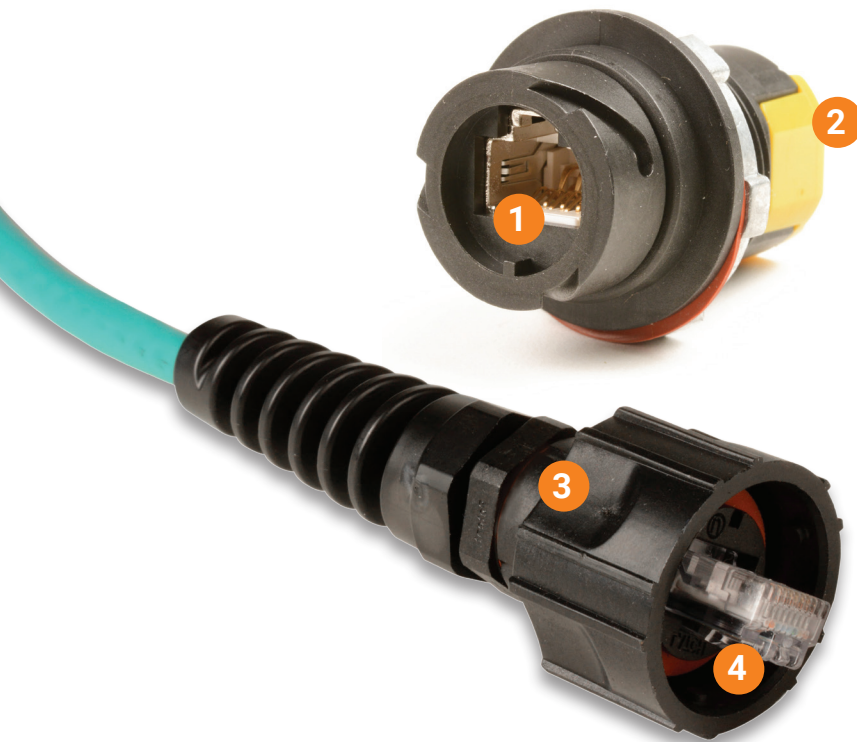


RUGGEDIZED COPPER CONNECTIVITY

Siemon is well-known for its industry leading high performance connectivity. The same high performance copper and fiber products are available with our patented Ruggedized Z-MAX® housings. Ruggedized outlets and modular patch cords provide an IP66/IP67- rated seal, protecting plug and outlet contacts from dust, moisture, vibration, and common cleaning chemicals. These solutions are ideal for protecting valuable connections in laboratory environments, hospitals, food processing plants and other harsh environments.



1. Standardized Interface

The Ruggedized connector has been recognized by the Open DeviceNet Vendor Association (ODVA), TIA-1005A-2020 and IEC 61076-3-106.

2. Easy Termination

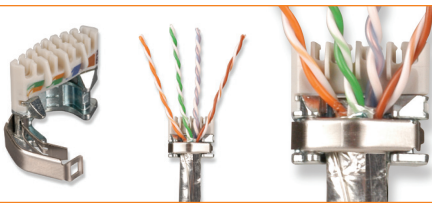
The Ruggedized Z-MAX outlets innovative linear lacing technology and user-friendly Z-Tool enable fast terminations, while removing installation variability for consistent, repeatable performance.

3. Gripping Ribs

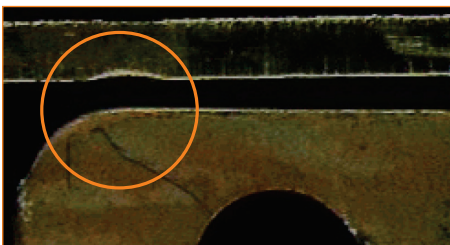
Plug housing and dust caps feature ribs to provide additional gripping for mating and unmating.

4. Ensures Proper Seal

Quarter-turn bayonet-style mating ensures proper plug depth into the outlet and an IP66/IP67 rated seal.

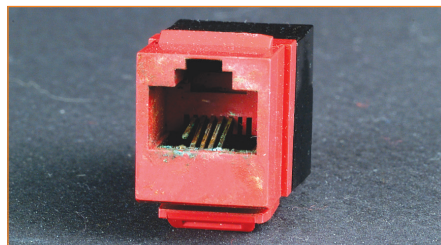


Compared to all other RJ-45 products on the market today the Z-MAX termination process embraces the principle that simpler is better. By establishing straight forward steps that eliminate potential errors, Siemon has been able to set a new benchmark for the fastest UTP and shielded category 6A outlet termination speed.



Vibration Causes Contact Damage in Typical Outlets

Seen under a microscope after exposure to extreme vibration, contact between a typical modular plug and outlet can pit the contact pins, causing intermittent transmission problems.



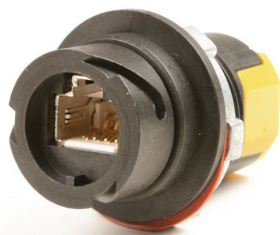
Humidity Affects Typical Outlets

Humidity corrodes contact pins inside typical outlets. Repeated exposure can eventually destroy the contact pins, rendering the outlet unusable. The Ruggedized MAX outlets special housing prevents this corrosion.



Meets Harsh Demands of the Environment

Specially designed Ruggedized connectors can withstand humidity, dust and vibration.



Ruggedized G2 Z-MAX® Outlets



Ruggedized Bulkhead Coupler



Ruggedized Plugs

RUGGEDIZED G2 Z-MAX OUTLETS

The Ruggedized G2 Z-MAX Outlets feature Siemon's high performance Z-MAX Outlets with innovative and fastest termination method in the industry. The combination of premium connectivity and Ruggedized housing with quarter-turn bayonet-style mating design provides a high performance solution for harsh environments.

| Part Number | Description |
|-----------------|--|
| XG2-Z5S | Category 5e Shielded Ruggedized G2 Z-MAX outlet, T568A/B |
| XG2-Z6 | Category 6 UTP Ruggedized G2 Z-MAX outlet, T568A/B |
| XG2-Z6A | Category 6A UTP Ruggedized G2 Z-MAX outlet, T568A/B |
| XG2-Z6AS | Category 6A Shielded Ruggedized G2 Z-MAX outlet, T568A/B |

RUGGEDIZED BULKHEAD COUPLER

The Ruggedized Bulkhead Coupler provides back-to-back shielded category 5e outlets in a single Industrial shell to enable protected plug-to-plug connections. This robust connector is fully protected on both sides to provide a true IP 66/67 connection, surpassing typical designs where only one side is protected. The modular design allows panel feed-thru connections without the need for termination. While the Bulkhead Coupler provides sealing on both sides, it is also ideal for use on enclosures with a protected connection on the outside to a device, and standard modular patch cord on the inside to a switch or controller.

| Part Number | Description |
|---------------|--|
| X5-X5S | Category 5e Shielded, MAX Ruggedized bulkhead coupler (outlet to outlet) |

RUGGEDIZED PLUGS

The Ruggedized Plug features a category 5e modular plug contained in Siemon's Ruggedized-grade housing with patented quarter-turn bayonet-style mating design. The plug can be terminated in the field, allowing custom lengths to be assembled quickly on site in the event a cable is cut or damaged. It terminates to twisted-pair cable with 22 – 26 AWG (0.64 – 0.40mm) solid or 7-strand conductors with an insulated conductor diameter of 0.86 – 0.99mm.

| Part Number | Description |
|--------------|---|
| XP85 | Category 5e UTP, Ruggedized plug, 8-position, 8-contacts |
| XP85S | Category 5e Shielded, Ruggedized plug, 8-position, 8-contacts |

Product Information



Ruggedized to Ruggedized



Ruggedized to Modular



Modular to Modular

RUGGEDIZED CATEGORY 5E UTP PATCH CORDS

The Ruggedized category 5e UTP patch cords are constructed using flame-retardant thermoplastic elastomer (TPE) outer jacket. Combined with a high flex construction, oil-resistant jacket, UL/cUL CM/CMX outdoor rating, and temperature range of -40 to 75°C (167°F), they are ideal for providing end-to-end category 5e channel performance in harsh environments and easily transition from indoor to outdoor environments.

Ruggedized to Ruggedized

| Part Number | Description |
|------------------|---|
| XC5-(XX)T | Category 5e, UTP, Patch Cord, Ruggedized Plug-to- Ruggedized Plug, Black Cable, Stranded, CM/CMX Outdoor, TPE |

Use (XX) to specify length: 03 = 0.9m (3 ft.), 05 = 1.5m (5 ft.), 07 = 2.1m (7 ft.), 10 = 3.1m (10 ft.), 15 = 4.6m (15 ft.), 20 = 6.1m (20 ft.)

Ruggedized to Modular

| Part Number | Description |
|----------------------|--|
| XC5-(XX)-B05T | Category 5e, UTP, Patch Cord, Ruggedized Plug-to-Modular RJ45 Plug, Black Cable w/Yellow Boot, Stranded, CM/CMX Outdoor, TPE |

Use (XX) to specify length: 03 = 0.9m (3 ft.), 05 = 1.5m (5 ft.), 07 = 2.1m (7 ft.), 10 = 3.1m (10 ft.), 15 = 4.6m (15 ft.), 20 = 6.1m (20 ft.)

Modular to Modular

| Part Number | Description |
|------------------------|---|
| XC5U-SS(XXX)FT5 | Category 5e, UTP, Patch Cord, Modular RJ45 Plug -to-Modular RJ45 Plug, Black Cable w/Yellow Boot, Stranded, CM/CMX Outdoor, TPE |

Use (XXX) to specify length: 003 = 0.9m (3 ft.), 005 = 1.5m (5 ft.), 007 = 2.1m (7 ft.), 010 = 3.1m (10 ft.), 015 = 4.6m (15 ft.), 020 = 6.1m (20 ft.)

RUGGEDIZED CATEGORY 5E SHIELDED

The Ruggedized category 5e shielded patch cords are constructed with PVC,TPE and PUR jacket types to meet various environmental requirements. They are ideal for providing end-to-end category 5e channel performance in various environments (see table on last page for jacket comparison).

Ruggedized to Ruggedized

| Part Number | Description |
|-------------------|---|
| XC5S-(XX) | Category 5e, Shielded (F/UTP), Patch Cord, Ruggedized Plug-to- Ruggedized Plug, Teal Cable, Stranded, PVC, CMR |
| XC5S-(XX)T | Category 5e, Shielded (SF/UTP), Patch Cord, Ruggedized Plug-to- Ruggedized Plug, Black Cable, Stranded, CM/CMX Outdoor, TPE |
| XC5S-(XX)U | Category 5e, Shielded (SF/UTP), Patch Cord, Ruggedized Plug-to- Ruggedized Plug, Black Cable, Stranded, CMX, PUR-LSZH |

Use (XX) to specify length: 03 = 0.9m (3 ft.), 05 = 1.5m (5 ft.), 07 = 2.1m (7 ft.), 10 = 3.1m (10 ft.), 15 = 4.6m (15 ft.), 20 = 6.1m (20 ft.)

Ruggedized to Modular

| Part Number | Description |
|-----------------------|--|
| XC5S-(XX)-B05 | Category 5e, Shielded (F/UTP), Patch Cord, Ruggedized Plug-to- modular RJ-45 plug, Teal Cable w/Yellow Boot, Stranded, PVC, CMR |
| XC5S-(XX)-B05T | Category 5e, Shielded (SF/UTP), Patch Cord, Ruggedized Plug-to- modular RJ-45 plug, Black Cable w/Yellow Boot, Stranded, CM/CMX Outdoor, TPE |
| XC5S-(XX)-B05U | Category 5e, Shielded (SF/UTP), Patch Cord, Ruggedized Plug-to- modular RJ-45 plug, Black Cable w/Yellow Boot, Stranded, CMX, PUR-LSZH |

Use (XX) to specify length: 03 = 0.9m (3 ft.), 05 = 1.5m (5 ft.), 07 = 2.1m (7 ft.), 10 = 3.1m (10 ft.), 15 = 4.6m (15 ft.), 20 = 6.1m (20 ft.)

Product Information

RUGGEDIZED CATEGORY 5E SHIELDED (*continued*)

Modular to Modular

| Part Number | Description |
|----------------|--|
| XC5S-SS(XXX)FV | Category 5e, Shielded (F/UTP), Patch Cord, modular RJ-45 plug -to- modular RJ-45 plug, Teal Cable w/Yellow Boot, Stranded, PVC, CMR |
| XC5S-SS(XXX)FT | Category 5e, Shielded (SF/UTP), Patch Cord, modular RJ-45 plug -to- modular RJ-45 plug, Black Cable w/Yellow Boot, Stranded, CM/CMX Outdoor, TPE |
| XC5S-SS(XXX)FU | Category 5e, Shielded (SF/UTP), Patch Cord, modular RJ-45 plug -to- modular RJ-45 plug, Black Cable w/Yellow Boot, Stranded, CMX, PUR-LSZH |

Use (XXX) to specify length: 003 = 0.9m (3 ft.), 005 = 1.5m (5 ft.), 007 = 2.1m (7 ft.), 010 = 3.1m (10 ft.), 015 = 4.6m (15 ft.), 020 = 6.1m (20 ft.)

RUGGEDIZED CATEGORY 6 UTP PATCH CORDS

The Ruggedized category 6 UTP patch cords are constructed using flame-retardant thermoplastic elastomer (TPE) outer jacket over a polyvinyl chloride (PVC) inner jacket. Combined with a high flex construction, oil-resistant jacket, UL/cUL CM/CMX outdoor rating, and temperature range of -40 to 75°C (167°F), they are ideal for providing end-to-end category 6 channel performance in harsh environments and easily transition from indoor to outdoor environments.

Ruggedized to Ruggedized

| Part Number | Description |
|-------------|--|
| XC6-(XX)T | Category 6, UTP, Patch Cord, Ruggedized Plug-to- Ruggedized Plug, Black Cable, Stranded, CM/CMX Outdoor, TPE |

Use (XX) to specify length: 03 = 0.9m (3 ft.), 05 = 1.5m (5 ft.), 07 = 2.1m (7 ft.), 10 = 3.1m (10 ft.), 15 = 4.6m (15 ft.), 20 = 6.1m (20 ft.)

Ruggedized to Modular

| Part Number | Description |
|---------------|---|
| XC6-(XX)-B05T | Category 6, UTP, Patch Cord, Ruggedized Plug-to-Modular RJ45 Plug, Black Cable w/Yellow Boot, Stranded, CM/CMX Outdoor, TPE |

Use (XX) to specify length: 03 = 0.9m (3 ft.), 05 = 1.5m (5 ft.), 07 = 2.1m (7 ft.), 10 = 3.1m (10 ft.), 15 = 4.6m (15 ft.)

RUGGEDIZED CATEGORY 6A SHIELDED PATCH CORDS

The CM/LSOH-1 Ruggedized category 6A S/FTP shielded patch cords are ideal for providing end-to-end category 6A shielded channel solution for indoor environments when used in conjunction with Siemon's category 6A shielded cable and category 6A compatible shielded Ruggedized outlets. The TPE Ruggedized category 6A SF/UTP shielded patch cords are constructed using flame-retardant thermoplastic elastomer (TPE) outer jacket over a polyvinyl chloride (PVC) inner jacket. Combined with a -40 to 80°C (-40 to 176°F) temperature range, high flex construction, oil resistant jacket and UL/cUL CM/CMX outdoor rating, they easily transition from indoor to outdoor environments and are ideal for providing end-to-end category 6A shielded channel solution for harsh environments when used in conjunction with Siemon's category 6A shielded cable and category 6A compatible shielded Ruggedized outlets.

Ruggedized to Modular

| Part Number | Description |
|-----------------|---|
| XC6A-S(XX)-B05 | Category 6A Patch Cord, Shielded (S/FTP), Ruggedized Plug-to-Modular RJ45 Plug, White Cable w/Yellow Boot, Indoor, Stranded CM/LSOH-1 |
| XC6A-S(XX)-B01T | Category 6A Patch Cord, Shielded (SF/UTP), Ruggedized Plug-to-Modular RJ45 Plug, Black Cable w/Black Boot, Stranded, CMR/CMX Outdoor, TPE |

Use (XX) to specify length: 03 = 0.9m (3 ft.), 05 = 1.5m (5 ft.), 07 = 2.1m (7 ft.), 10 = 3.1m (10 ft.), 15 = 4.6m (15 ft.), 20 = 6.1m (20 ft.)

Modular to Modular

| Part Number | Description |
|------------------|--|
| XC6AS-SS(XX)F01T | Category 6A Patch Cord, Shielded (SF/UTP), Modular RJ45 Plug -to-Modular RJ45 Plug, Black Cable w/Black Boot, Stranded, CMR/CMX Outdoor, TPE |

Use (XX) to specify length: 03 = 0.9m (3 ft.), 05 = 1.5m (5 ft.), 07 = 2.1m (7 ft.), 10 = 3.1m (10 ft.), 15 = 4.6m (15 ft.), 20 = 6.1m (20 ft.)

Product Information

RUGGEDIZED DUST CAPS

The Ruggedized dust caps are the ideal way to protect your investment in your Ruggedized cabling system. Outlet dust caps can be used to protect unused outlets or to seal an outlet during wash down periods when the outlet and plug may be disconnected. Plug dust caps protect Ruggedized patch cords from exposure to elements or accidental damage when not mated to an outlet. Dust caps are constructed of ruggedized-grade thermoplastic for superior protection and durability. Additionally, outlet and plug dust caps feature a retention tether, which prevents them from being misplaced when not in use.



| Part Number | XP-CAP2 | XG2P-CAP | X-CAP | XG2-CAP |
|-------------|--|---|--|---|
| Description | Ruggedized plug dust cap with metal retention tether | Ruggedized G2 plug dust cap with nylon retention tether | Ruggedized MAX outlet dust cap with metal retention tether | Ruggedized G2 outlet dust cap with nylon retention tether |

RUGGEDIZED SURFACE MOUNT BOXES

The Siemon Ruggedized MAX Surface Mount Box (IBOX) mounts either Siemon copper or fiber Ruggedized outlets. Boxes provide an IP66/IP67 (NEMA 4X) seal and can be mounted on virtually any flat surface. Available in 1, 2, 3, and 4-port versions. Compression fittings provided for cable entry. Contact Technical Support for punch tool to create Ruggedized knockouts for custom mounting.



| Part Number | X-IBOX-01 | X-IBOX-02 | X-IBOX-03 | X-IBOX-04 |
|-------------|---|--|--|--|
| Description | Ruggedized surface mount box, 1-port, supplied with 1 cable entry compression fitting | Ruggedized surface mount box, 2-port, supplied with 2 cable entry compression fittings | Ruggedized surface mount box, 3-port, supplied with 3 cable entry compression fittings | Ruggedized surface mount box, 4-port, supplied with 4 cable entry compression fittings |

RUGGEDIZED STAINLESS STEEL FACEPLATES

Mount Siemon's Ruggedized outlets and adapters into these stainless steel faceplates for a protective seal from moisture and debris. The faceplates are available in 1-, 2-, 3- and 4-port options with a rear sealing gasket and carry an IP44 rating. Faceplates include mounting screws with sealed screw head.



| Part Number | XFP-S-01-SS | XFP-S-02-SS | XFP-D-03-SS | XFP-D-04-SS |
|-------------|--|--|--|--|
| Description | Single gang faceplate, 1-port, stainless steel | Single gang faceplate, 2-port, stainless steel | Double gang faceplate, 3-port, stainless steel | Double gang faceplate, 4-port, stainless steel |

Patch Cord Comparison

| Performance Criteria | PVC | TPE | | PUR |
|--|-----------------------------------|-----------------------------------|------------------|-----------------------------------|
| Cable Type | F/UTP | UTP | SF/UTP | SF/UTP |
| Conductors | Conductors 24 AWG Tinned Cu | 24 AWG Tinned Cu | 26 AWG Tinned Cu | 26 AWG Tinned Cu |
| Conductor Insulation Material | Polyolefin | High-Density Polyethylene | Polyolefin | High-Density Polyethylene |
| Jacket Construction | Double Jacket | Single Jacket | | Single Jacket |
| Jacket Material (Outer) | Polyvinyl Chloride | Thermoplastic | | Polyurethane |
| Shielding (SF/UTP Only) | Aluminum Tape 65% Tinned Cu Braid | Aluminum Tape 85% Tinned Cu Braid | | Aluminum Tape 75% Tinned Cu Braid |
| Overall Cable Diameter | 0.315" | 0.227" | 0.245" | 0.244" |
| RoHS Compliant and Lead Free | Yes | Yes | | Yes |
| Dielectric Strength and Electrical Performance | Good | Good | | Fair |
| Low Temperature Flexibility and Brittle Point | Fair | Excellent | | Excellent |
| Tear Resistance | Fair | Excellent | | Excellent |
| Abrasion and Scuff Resistance | Good | Good | | Excellent |
| Flexibility and Flex-Life | Good | Excellent | | Excellent |
| Tensile Strength and Toughness | Good | Good | | Excellent |
| Resistance to Ozone | Excellent | Good | | Good |
| Ultraviolet and Weather Resistance | Fair | Good | | Good |
| Resistance to Acids | Fair | Excellent | | Fair |
| Resistance to Bases | Good | Good | | Good |
| Resistance to Moisture | Good | Excellent | | Excellent |
| Resistance to Petrochemicals | Good | Fair | | Fair |
| Flame and Fire Resistance | Excellent | Good | | Fair |
| Temperature Rating | -20°C (4°F) to 60° (140°F) | -40°C (-40°F) to 75°C (167°F) | | -40°C (-40°F) to 75°C (167°F) |
| Outdoor Use (Not for Direct Burial) | Not Recommended | UL CMX Outdoor | | Not Listed |
| UL/ETL Listing | CMR | CM, CMX Outdoor | | CMX |
| Low Smoke, Zero Halogen | No | No | | Yes |

Technical Information

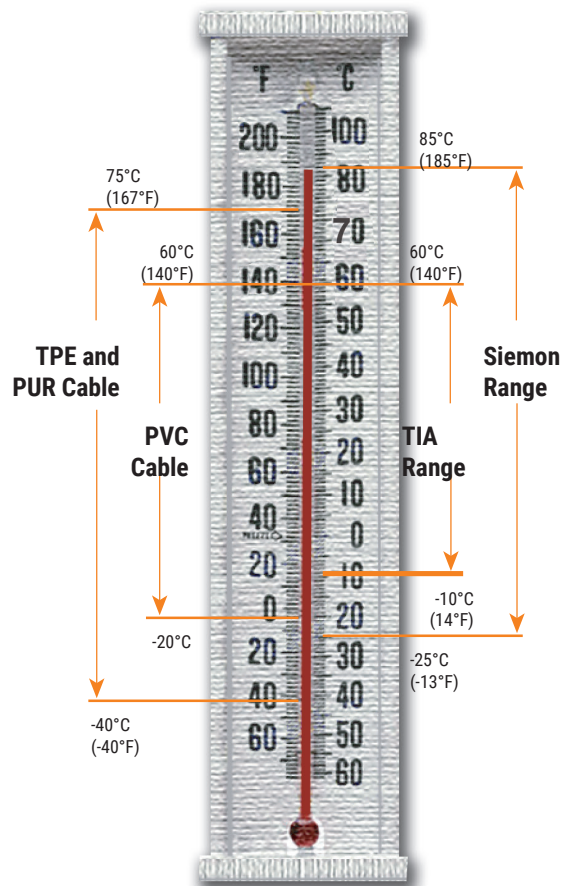
| Ingress Protection | Plug/Outlet | IP66/67 minimum and NEMA 6 Temperature: -25°C (-13°F) to 85°C (185°F) |
|----------------------------|-------------|--|
| Shell Material | Plug/Outlet | PBT - Polybutylene Terephthalate (Valox®), UL94V-0 |
| Collar Nut Material | Plug/Outlet | Acetal, Acetal/Elastomer alloy (Delrin®) – Bulkhead Coupler: Zinc |
| Gasket Material | Plug/Outlet | Silicone |
| Contact Material | Plug/Outlet | Copper alloy |
| Contact Plating | Plug/Outlet | 50 microinch minimum hard gold over nickel |
| Mechanical Durability | Plug/Outlet | 750 cycles minimum |
| Chemical Resistance | Plug/Outlet | Materials have been selected to provide the widest range of protection from most solvents and common industrial chemicals. (Details available upon request) |
| Bulkhead Thickness | Outlet | 0.762mm to 3.175mm (0.030 in. to 0.125 in.) |
| Electrical Rating – Plug | Plug | Voltage: 150 volts AC Current: 175 mA Dielectric Withstanding Voltage: 1000 VAC contact-to-contact; 1500 VAC contact-to-ground |
| Electrical Rating – Outlet | Outlet | Voltage: 150 volts AC maximum @ 25° C Current: 1.5 amp max. @ 25 C Dielectric Withstanding Voltage: 1000 VAC, RMS 60 Hz, 1 minute Surge Test: to 1000 volts |
| Electrical Resistance | Outlet | Insulation: 50 MΩ minimum Contact: 20 MΩ maximum |

IP CODE TABLE

| Index Figure | Degree of Protection | | Degree of Protection | | Index Figure |
|--------------|--|---|---|-----------------------------|--------------|
| 0 | No Protection | No protection against accidental contact, no protection against foreign bodies | No Protection against water | No Protection | 0 |
| 1 | Protection against large foreign bodies | Protection against contact with a large area by hand and against large solid bodies Ø> 50mm | Protection against Vertical water drips | Drip-Proof | 1 |
| 2 | Protection against medium sized foreign bodies | Protection against contact with fingers, protection against small foreign solid bodies with Ø>12mm | Protection against water drips (up to a 15° angle) | Drip-Proof | 2 |
| 3 | Protection against small solid foreign bodies | Protection against tools, wires, or similar objects with 2.5 mm protection against small foreign bodies with Ø>2.5 mm | Protection against water drips (up to a 60° angle) | Spray-Proof | 3 |
| 4 | Protection against grain shaped foreign bodies | Protection against foreign bodies with Ø>1mm | Protection against splashed water from all directions | Spray-Proof | 4 |
| 5 | Protection against deposits of dust | Full protection against contact. Protection against interior equipment damage due to dust deposits | Protection against splashed water (out of a nozzle) from all directions | Hose-Proof | 5 |
| 6 | Protection against ingress of dust | Total protection against contact and protection against penetration of dust. | Protection against temporary flooding | Protected against flooding | 6 |
| | | | Protected against temporary immersion | Protected against immersion | 7 |
| | | | Protected against water pressure | Water-tight | 8 |

TEMPERATURE RANGE

Siemon vs. TIA



Because we continuously improve our products, Siemon reserves the right to change specifications and availability without prior notice.

North America
P: (1) 860 945 4200

Mexico
P: (521) 556 387 7708/09/10

Latin America
P: (571) 657 1950/51/52

Europe
P: (44) 0 1932 571771

China
P: (86) 215385 0303

India, Middle East & Africa
P: (971) 4 3689743

Asia Pacific
P: (61) 2 8977 7500

Siemon OEM Technologies
P: (1) 860 945 4213
www.siemon.com/OEM